

Job Name/Location:

Tag #:

Date:

For: File Resubmit
 Approval Other

PO No.:

Architect: GC:

Engr: Mech:

Rep:

(Company)

(Project Manager)



ARNU763B8A4
Multi V™ High Static Ducted
76,400 Btu/h Indoor Unit



Performance:

Total Cooling Capacity (Btu/h)	76,400
Heating Capacity (Btu/h)	86,000
Max Power Input ¹ (W)	800
L/M/H Power Input at Factory Default (W)	505 / 505 / 765

Rated capacity is certified under AHRI Standard 1230. Ratings are subject to change without notice. Current certified ratings are available at www.ahridirectory.org.

Electrical:

Power Supply (V/Hz/Ø)	208-230/60/1
Rated Amps (A)	5.2

Piping:

Refrigerant:

Liquid Line (in, OD) ¹⁴	3/8 Braze
Vapor Line (in, OD)	3/4 Braze

Condensate:

Condensate Pump Drain ² (in, ID)	1 Plain
Gravity Drain Plugged (in, OD)	1 MPT

Controls Features:

- Auto changeover (Heat Recovery only)
- Auto operation
- Auto restart
- Dual thermistor control
- Wi-Fi compatible
- Dual setpoint control
- Multiple aux heater applications
- Filter life display
- External on/off control
- Auto fan
- Leak detection
- Weekly schedule
- Fan speed control
- Group control
- Hot start
- Self diagnostics
- Timer (on/off)
- Child lock

Optional Accessories:

- Wireless Remote Controller³ - PQWRHQ0FDB
- Premium Controller - PREMTA000
- MultiSITE CRC1 Controller - PREMTBVC0
- MultiSITE CRC1+ Controller - PREMTBVC1
- Simple Controller - PREMTCC00U
- Wi-Fi Module - PWFMD200
- Simple Dry Contact (1 contact, 24 VAC external power) - PDRYCB100
- Dry Contact for Economizer - PDRYCB400
- Dry Contact for Third Party Thermostat - PDRYCB300
- Aux Heater Kit - PRARH1
- Remote Temperature Button Sensor - ZRTBS01
- High Efficiency Filter Box - ZFBXB801A

Entering Mixed Air:

Cooling Max ⁴ (°F WB)	76
Heating Min (°F DB)	59

Unit Data:

Refrigerant Type	R410A
Refrigerant Control	EEV
Sound Pressure ⁵ dB(A) (H/M/L)	50 / 48 / 48
Filter Type	Washable
MERV	N/A
Filter Quantity	1
Filter Dimensions ⁶ (in)	16-1/2" x 55" x 1/4"
Net Unit Weight (lbs)	192
Shipping Weight (lbs)	222

Fan:

Type	Sirocco
Fan Quantity	2
Motor/Drive	Brushless Digitally Controlled/Direct
Motor Quantity	2
Standard Mode Airflow Rate H/M/L (CFM)	2,050/1,766/1,766
Standard Mode External Static Pressure (ESP) ⁷ (in wg)	0.59
High Mode Airflow Rate H/M/L (CFM)	2,260/1,766/1,766
High Mode External Static Pressure (ESP) ⁷ (in wg)	0.86
Airflow Range (CFM)	1059 - 3298
Minimum ESP (in wg) ⁸	0.23
Maximum ESP (in wg) ⁸	0.98

Notes:

- 1 Maximum power input is rated at maximum setting value.
- 2 Maximum lift is 27 in from bottom of unit. Check valve not included (field supplied).
- 3 Requires an LG wall controller because ducted units do not have infrared receiver.
- 4 See Engineering Manual for sensible and latent capacities.
- 5 Sound Pressure levels are tested in an anechoic chamber under ISO Standard 3745.
- 6 Actual filter sizes may vary.
- 7 At factory fan speed setting.
- 8 Maximum static pressure may result in reduced airflow (CFM).
- 9 All Communication cable between Master outdoor units to indoor units / heat recovery units to be 18 AWG, 2-conductor, twisted, stranded, shielded. Ensure the communication cable shield is properly grounded to the Master outdoor unit chassis only. Do not ground the outdoor unit to indoor units / heat recovery units communication cable at any other point. Wiring must comply with all applicable local and national codes.
- 10 Power wiring cable size must comply with the applicable local and national code.
- 11 This unit comes with a dry nitrogen charge.
- 12 All capacities are net with a combination ratio between 95 – 105%.
- 13 Must follow installation instructions in the applicable LG installation manual.
- 14 Units manufactured March 2020 and after have brazed liquid line connection.

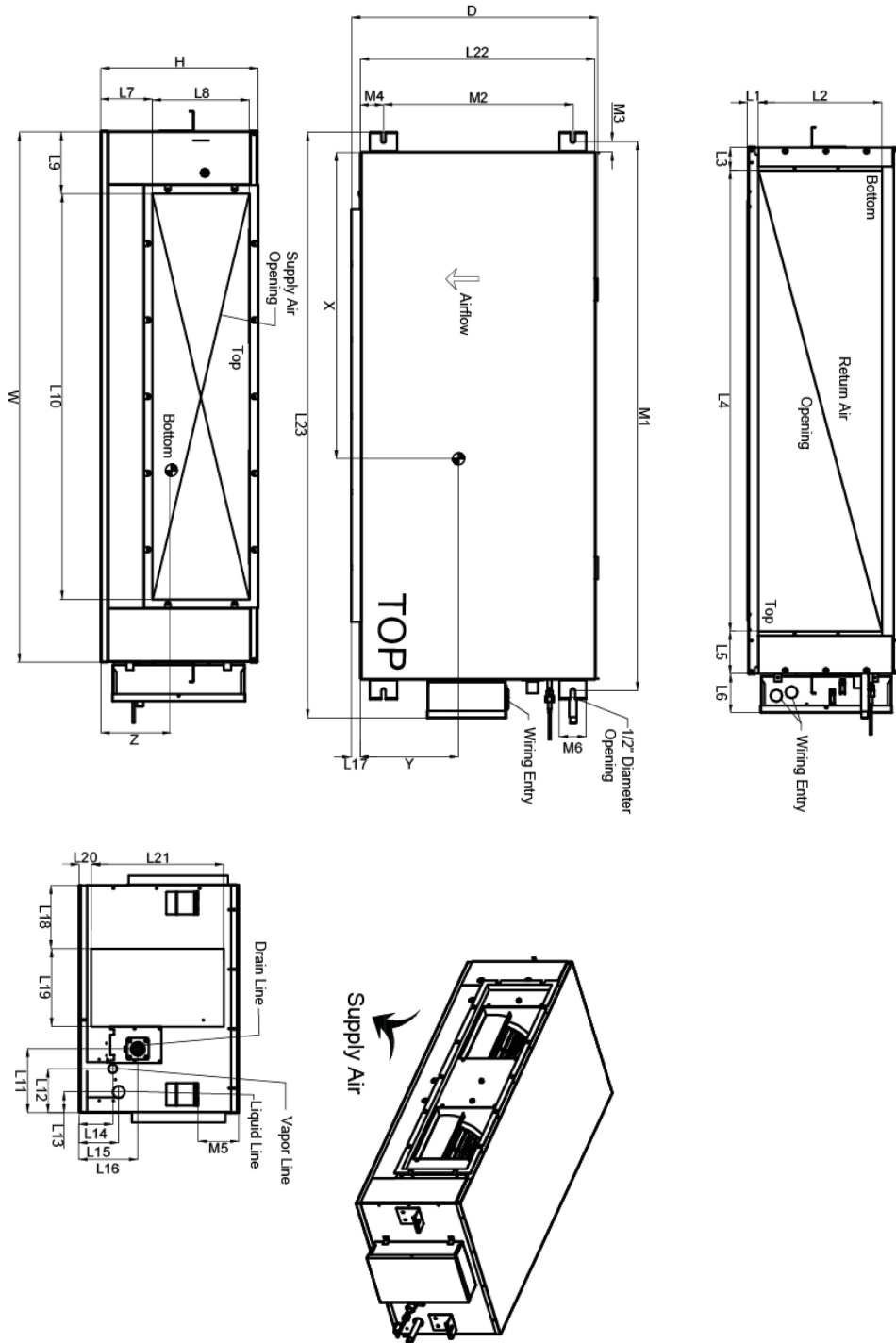


For continual product development, LG reserves the right to change specifications without notice.

ARNU763B8A4
Multi V™ High Static Ducted
76,400 Btu/h Indoor Unit



Tag #: _____
Date: _____
PO No.: _____



W	61 1/2"
D	28 5/8"
H	18 1/8"
L1	2 3/8"
L2	15 7/16"
L3	2"
L4	5 5/8"
L5	4 9/16"
L6	4 1/2"
L7	6"
L8	11 5/8"
L9	6 3/4"
L10	4 1/4"
L11	7 5/8"
L12	5 1/4"
L13	2 1/2"
L14	4 3/4"
L15	5 1/2"
L16	6 7/8"
L17	1 3/16"
L18	7 13/16"
L19	9 3/16"
L20	1 5/16"
L21	15 3/8"
L22	27 1/8"
L23	68 1/4"
M1	63 13/16"
M2	22"
M3	1 3/16"
M4	2 1/2"
M5	4 1/8"
M6	3 3/16"

Center of Gravity

X	31 1/16"
Y	18 1/8"
Z	8 3/4"

Note - All dimensions have a tolerance of ± 0.25 in.
 = Center of gravity